

Spectrum Equipment Management

Equipment can represent one of your company's biggest capital investments. Realizing even a small margin of additional efficiency or return on investment can have a significant impact on your bottom line. Spectrum Equipment Management Software allows you to streamline all of your equipment tracking, maintenance and management costs with one easy-to-use platform.



Record meters and fuel transactions, and handle preventive maintenance tasks right from the jobsite with the Equipment Field Entry Mobile Solution:

Equipment Field Entry by Dexter + Chaney is a powerful mobile app that lets you record meter readings and fuel transactions for your heavy construction equipment and stay on top of preventive maintenance without having to leave the jobsite.

A perfect complement to telematics data, Equipment Field Entry ensures that your construction equipment information is accurate and up-to-date, helps you keep your machines operating at peak efficiency, and helps create a clear picture of actual equipment costs and project job costs.

Equipment supervisors can track the location of all equipment and see which jobs they are assigned to, whether a particular piece of equipment is idle or in use and whether it is being billed accurately to jobs for its time/use. Through its automatic synchronization with Spectrum® Construction Software, you can build a historical record of equipment availability and operating costs, helping you make important decisions around fleet maintenance and equipment purchasing, rental, and sale commitments.

The Equipment Field Entry app works with tablet devices as well as iPhone and Android smart phones, and is available at both the Google Play and iTunes app stores.



Complete Equipment Oversight—From the Office to the Field and Beyond

Spectrum Equipment Management's cloud-based platform and simple-to-use interfaces allow you to bridge the gaps between the office, equipment yard and all of your jobsites. See all equipment data in real time and deliver that information to the right people, no matter where they are working. From managing fleet maintenance to tracking both owning and operating costs, Spectrum Equipment Management is a complete solution for optimizing your investment in heavy construction equipment.

The intuitive Spectrum Dashboard provides you with a simple, yet powerful platform to easily address all equipment issues, from meter readings, usage data and preventive maintenance tasks, to billing and rental rates, to full lifecycle ownership costs and fleet management decisions. Drill down directly from the dashboard for a complete look at individual data points.

Browser-based access along with powerful mobile apps allow you to access the same data in the field, providing real time insight into your equipment operations while also improving job cost and estimate accuracy. Spectrum Equipment Management will help you ensure that you have the right equip-

ment working on the right jobs, that idle equipment is being categorized and billed appropriately, that all equipment is efficiently maintained, and that the life of your equipment is extended through optimized fleet deployment.

Realizing Stronger Equipment Control

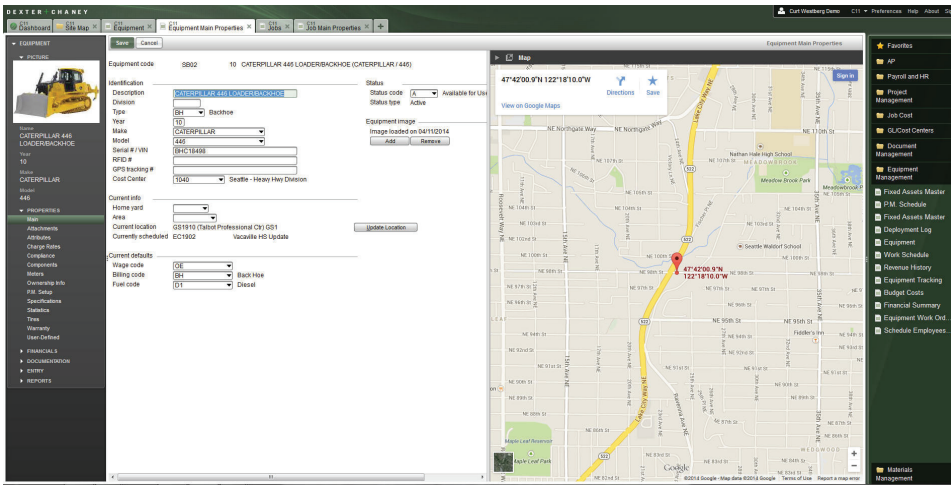
The foundation of Spectrum Equipment Management is the **Equipment Control** functionality. Spectrum's Equipment Control serves as the business intelligence solution for all equipment and equipment-related decisions.

Equipment Control lets you to charge equipment to jobs and perform in-depth profit and loss analysis, giving you valuable insight into how much you are charging for the use (or non-use) of equipment, and tracks all costs associated with individual pieces of equipment. Understand and control your purchase costs for parts, fuel usage and other equipment-related needs. You can track meter readings, as well as stay on top of any permits needed for equipment or compliance issues that need attention.

All revenue generated through the use—or rental to outside parties—of each piece of equipment is readily recorded and allocated to jobs in Spectrum. Usage on jobs can be assigned by standard hourly



SPECTRUM
CONSTRUCTION SOFTWARE



Know when equipment is in use and when to charge standby time (hourly, daily or weekly rental time for non-operating equipment) so that you can cover costs of ownership when equipment is not in use. Equipment Control also allows you to change usage or rental rates on any and all items or pieces of equipment.

Equipment Tracking also accounts for consumables and non-machine components and tools that might be used on jobs, such as hammers, barricades, and other items. Equipment Tracking talks to both Inventory Control and Equipment Control to ensure transparency across all and completely account for all costs and impacts throughout the organization, and allowing items to be billed to jobs correctly.

This provides you with complete, real-time equipment oversight, ensuring that your equipment and tools never get lost—whether in the field or on the balance sheet.

billing rates for each equipment code. As needed, special rates for specific jobs can quickly be assigned. Rental revenue can be tracked separately for each equipment code and separately for hourly, daily, weekly or monthly rental rate schedules.

Hours of use, whether on jobs or as a rental, are tracked by Equipment Control so that required preventive maintenance for each piece of equipment can be performed on a timely basis. Full integration with Spectrum's Preventive Maintenance functionality provide complete maintenance scheduling and repair history. Integration with Spectrum's Equipment Tracking provides automated entry of equipment charges.

Staying On Top of Preventive Maintenance

Spectrum's **Preventive Maintenance** functionality allows you to establish sound, effective maintenance schedules to keep your equipment running properly. Streamline the processes of scheduling and tracking maintenance and repairs on equipment. Efficiently handle repeating service schedules for daily, weekly, monthly or yearly maintenance tasks. You can provide detailed instructions for each maintenance task to be completed and these can be included when tasks are due.

Scheduled maintenance tasks set up for each piece of equipment can be flagged by mileage, hours of usage (from the Payroll module), number of days, or a combination of criteria such as 3,000 miles or six months, whichever occurs first. You can also enter specific materials or tools that will be needed to do the job properly.

The maintenance schedule can be printed as a complete schedule for all equipment or just for

overdue tasks. You can also view the schedule on the screen for a specific piece of equipment.

Fully integrated throughout Spectrum (including equipment control, payroll, job cost, inventory and more), Preventive Maintenance is more than just a task scheduling system. It tracks and notates any inventory items used for maintenance work and costs them to the specific piece of equipment being serviced. The Preventive Maintenance functionality also serves as a repair work order system, tracking individual repairs and establishing what the costs of those repairs were. This allows you to see total maintenance by work order number for each piece of equipment.

Preventive Maintenance will help you achieve lower equipment rates, better understand your equipment ownership and operating costs and keep your projects moving.

Ensuring Transparency with Equipment Tracking

Knowing where all of your equipment is at all times, how it is being used and how it is being charged is critical to construction projects. Spectrum's **Equipment Tracking** functionality is designed to track and charge your company equipment, tools, and inventory to jobs.

A simple-to-use solution, Equipment Tracking lets you stay on top of all movements of your equipment, such as issues and returns, in real time. Equipment can be checked out to jobs with a bar code scanner. Automatic, recurring billings are created by Equipment Tracking as long as the equipment is assigned to a specific job. Charges cease when the equipment is returned. The demobilization report provides a listing of equipment to be returned from any job.

Spectrum Equipment Management Features:

- + Track equipment revenues using rental rates or job cost schedule rates
- + Track equipment quantity, usage, prices and rental rates, markups
- + Track individual equipment location and to what jobs a piece of equipment is assigned
- + Track oil and fuel usage
- + Track meters for mileage, hours, tire levels and more
- + Track equipment components, tools and other inventory or costs
- + Track compliance documentation, insurance, and license fees
- + Track depreciation, statistical information and lifecycle status on all equipment
- + Interfaces with bar code scanners and labels
- + Streamline all preventive maintenance tasks
- + Schedule and track equipment work orders
- + Easily search service and repair histories
- + Full, customizable reporting capability on all equipment data with ability to set up recurring reports
- + Full integration throughout Spectrum, including Accounting, Job Cost, Document Imaging, Payroll, Work Order and Inventory

